



PUBLISHED BY THE LADIES OF NOTRE DAME & SAINT MARY'S COLLEGE

VOLUME 44 NUMBER 5

APRIL 2010

<http://lndsmc.com>

From the PRESIDENT . . .

It is hard to believe that another academic year is nearly over. The time seems to have passed so quickly! I hope that you all are enjoying the beautiful spring weather.

I would like to extend my sincere thanks to Val Bartels and all those who helped at the scholarship fundraiser at the Notre Dame Hammes Bookstore. In recent years, the monies raised at this fundraiser have decreased dramatically. We, as an organization, must strategize other fundraising opportunities if we are to continue to provide scholarships. I have met many of our recent scholarship recipients and feel strongly that our continued efforts to support them are very worthwhile. Brigid Edmonds and I will be the Program Co-chairs for next year and would appreciate any input or ideas for new means of fundraising for supporting the scholarship fund in the future. Please email Brigid <ebedmonds@comcast.net> or me <jdv12@hotmail.com> with your ideas.

There are still some Ladies activities to take advantage of before the summer. Our Annual Business meeting will take place on Wednesday, April 21, 2010, at 7:00 pm at Geddes Hall, the new home of the Institute for Church Life and the Center for Social Concerns. The guest speaker is Mary Beckman of the Center for Social Concerns. At the business side of the meeting we will vote to adopt the changes to our by-laws, namely, the disbandment clause and rainy day account, both of which have been previously published in the March newsletter. Next year's slate of officers will also be elected at this meeting. I also hope to see many of you at the

Spring Luncheon and Fashion Show on May 1, 2010, and the Memorial Mass on May 6, 2010.

As my presidential term comes to a close, I want to express my deep gratitude for all those whose hard work and help have made my job easier this year. It has been a privilege and honor to serve the Ladies as President. Enjoy the summer!

*Jennifer Velasco,
President*

THE LADIES OF NOTRE DAME & SAINT MARY'S COLLEGE

**ANNUAL BUSINESS MEETING
&
TOUR OF GEDDES HALL**

WEDNESDAY
APRIL 21, 2010

7:00 PM

MARY BECKMAN
SPEAKER

- ELECTION OF BOARD
 - VOTE ON BYLAWS
 - REFRESHMENTS & CONVERSATION
- SEE P.3 FOR PARKING OPTIONS.

LADIES OF NOTRE DAME & SAINT MARY'S COLLEGE 2009-2010 PROGRAM

HTTP://WWW.LNDSMC.COM

- April 21, 2010
Wednesday
7:00 PM
"Annual Business Meeting" Tour of Geddes Hall
(new home of the Institute for Church Life and the Center for Social Concerns)
Speaker: Mary Beckman, Center for Social Concerns
Chair: Carol Porter 272-8151
- April 27, 2010
Tuesday
7:30 PM
"Evening With Friends" Lula's Café on corner of Edison Rd. and S.R. 23.
Meet for Coffee and Conversation.
Chair: Julie Silliman 272-2756
- May 1, 2010
Saturday
11:30 AM
Spring Luncheon and Fashion Show at Knollwood Country Club
Fashions by CHICO'S, INSPIRE ME, and LILLY'S SWEET PEAS
Co-chairs: Brigid Edmonds 217-7070 & Kat Caine 303-2480
- May 6, 2010
Thursday
5:00 PM
Memorial Mass in Chapel of St. Joseph Hall
Sacred Heart Parish Center off of Douglas Road
Chairs: Marge Marley 289-9134 & Addie Cashore 289-3325
- June 4, 2010
Friday
8: 20 AM
"Off the Beaten Path" to Chicago via the South Shore RR to visit Art Institute
Matisse: *Radical Invention, 1913-1917* and Eastside Millennium Art Festival
Chairs: Julie Silliman, 272-2756 & Mary Lou Derwent 277-1996

From the PROGRAM CHAIR . . .



The last "Off the Beaten Path" trip planned for this year is a trip to Chicago to visit both the Art Institute's Matisse exhibit and the Eastside Millennium Art Festival. For those who have not walked through the new Millennium Park, there will be time to do so. See the website: <<http://amdurproductions.com/f-eastside-public.html>> for

the Festival and <<http://www.artic.edu/aic/collections/exhibitions/Matisse/exhibitionthemes>> for the Matisse.

Meet at the South Shore Station at the Airport by 8: 20 AM EDT, purchase a ticket and board the train for an 8:48 AM EDT departure. Return to South Bend will be on the 3:58 PM CDT or 5:10 PM CDT train, dependent upon the needs

of the traveler. For those with membership, there is no charge for admission to the Art Institute and the special exhibit. For those who are not members, there is an \$18 (senior \$12) charge covering admission and the exhibit.

Lunch will be at a place convenient and agreeable to all. We will decide on the train. Since this trip entails considerable walking it will be done at a leisurely pace. Wear comfortable shoes. Address questions to Mary Lou Derwent (277-1996) or Julie Silliman (272-2756). Let either of them know if you are going so they can look for you at the station. You and guests will be welcomed.



PARKING OPTIONS FOR THE ANNUAL MEETING AT THE CENTER FOR SOCIAL CONCERNS

The new building housing the *Center for Social Concerns* is Geddes Hall. It is located directly to the Northwest of the back of the Hesburgh Library.

- Parking is available in the Library Lot follow the sidewalk between the Library and the dorms (north of the Library) which leads directly to Geddes Hall.
- Parking also is available at the Stepan Center's lot (opposite Grace Hall). Follow the sidewalk between Grace and Flanner Hall to the west (right) in front of the west side of Grace Hall toward the library. The sidewalk intersects with the sidewalk between the library and the dorms . . . go right and you will come to Geddes Hall.
- If anyone needs to be dropped off, you can drive up the road next to the North Dining Hall and pull up at the west side door to Geddes Hall. There is NO PARKING (not even handicapped) near Geddes Hall. The small parking area north of Geddes Hall is for the dorm staff.

From the VOLUNTEER OPPORTUNITIES COORDINATOR . . .

THE CENTER FOR HOSPICE and Palliative Care, Inc. (CHAPC) was founded in 1978 by a group of dedicated volunteers. The Center's mission is to provide quality of life to persons facing life-limiting illnesses.

Licensed as both a home health and hospice agency, CHAPC allows patients to seek aggressive or curative treatment as well as those who wish to allow nature to take its course. Palliative care is provided to all of these patients. All patients and families are served by a team of professional nurses, home health aides, spiritual care counselors, social workers and volunteers.

As part of the interdisciplinary team, volunteers play a key role through their offerings of personal care, emotional support and transportation. Through their home respite visits, they allow caregivers a much needed break from the demands of care-giving. Volunteers assist patients in their homes, in the Center's inpatient

THE LND/SMC SLATE OF OFFICERS IS PRESENTED FOR 2010-2011

- President. Julie Silliman
- President Elect
- Past President. Jennifer Velasco
- Co-Program Chairs. Brigid Edmonds
Jennifer Velasco
- Recording Secretary. Molly Frabutt
- Corresponding Secretary. Amy Shrout
- Treasurer. Bobbie Corke
- Assistant Treasurer. Brigitte Mulvehill
- Co-Membership Chairs Pam Chipman
Linnea Lannon

Many thanks to a wonderful committee of Anne Burks, Bobbie Corke, Allison Nijim and Valerie Bartels, for all their hard work in putting together a great slate of officers.

Val Bartels
Past President

unit and also visit patients in nursing homes. After the death of a loved one, bereavement volunteers provide emotional phone support to families.

Volunteers are needed to serve more families. Training will be offered in the Center's South Bend office.

For more information regarding this program, please contact Jackie Boynton, Volunteer Service Coordinator, at 574/243-3127.

Mildred Ulicny, 277-0526
Volunteers Opportunities Coordinator

For ten years, Mildred Ulicny has been researching places in our community that welcome and train volunteers. She has regularly informed us of these community needs and provided us with the information needed. Thank you, Mildred, for coordinating this effort. Mildred is now retiring!

JOIN THE LADIES OF NOTRE DAME & SAINT MARY'S COLLEGE FIGHT AGAINST CANCER

Relay for Life is the American Cancer Society's national signature event. It raises monies to support the American Cancer Society's programs such as research, education, advocacy and service. It also raises awareness about this disease that affects many people in our community. Notre Dame's Relay for Life (RFL)



will take place in the Notre Dame football stadium, starting Friday, April 16, 2010, from 6:00 PM - until Saturday, April 17, 2010, at 9:00 AM. Heidi Lamm and Pam Burish are co-chairs of this team and welcome your participation!. You can register for our team named

Perpetual Motion at <<http://www.relayforlife.org/ndin>> Click on **Sign up**, then **Join a Team**, then **Search for a Team**, then choose **Perpetual Motion**, and register.

Thank you for considering joining Perpetual Motion. If you have any questions, please do not hesitate to contact me. *Heidi Lamm, 255-8263* <hllamm@nd.edu>

From the INTEREST GROUP CHAIRS . . .

CREATIVE COOKING:

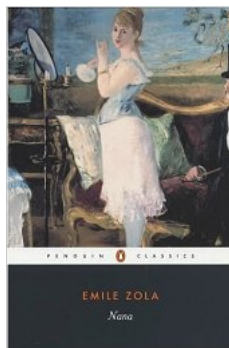
The last creative cooking event on Tuesday, May 4, 2010, at 7:00 PM will be at the home of Runa Mozumder. We will nibble on munchies while we plan out our schedule for 2010-11.

Val Bartels, 271-3637.

THE EVENING LITERATURE GROUP:

The last meeting of this academic year is May 6, 2010, the book is *Nana* by Emil Zola and the place is Laura Fuderer's home, 51934 Lily Rd. SB. The summer reading list will be determined. Email chair Christine Costello <costello209@comcast.net> with suggestions. Members will be sent list.

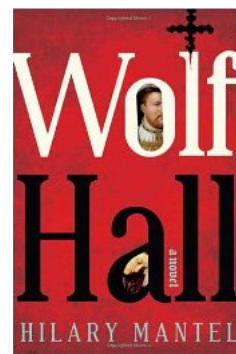
Christine Costello, 232-6579



THE MONTHLY CRAFT NIGHT GROUP:

We had such a great time crafting together this year. It was so nice getting to know everyone who participated. If you were not able to join us this year, keep an eye out for the Craft Night dates for next year. If you have any great craft ideas, please feel free to pass them on to chair Kat Caine at <kmcaine@gmail.com> or 574-303-2480.

THE MORNING LITERATURE GROUP:



Member Barb Roche has invited the group to her home for the discussion of *Wolf Hall* by Hilary Mantel on Monday, May 10, 2010, at 9:30 AM.

Hilary Mantel won the 2009 Man Booker Prize as well as the Nation jBook Critic Prize for this novel. It focuses on a slice of known Tudor history, the divorce of Henry VIII from Ann Boleyn, but shows it through the eyes of Thomas Cromwell ...and the political intrigue of the period. It presents the other (the Protestant) side of the story. Let Sheila Marshall know that you are attending. Directions will be provided to Barb's home.

The only planned summer activity for the group is a "planning lunch" on Monday, August 9, 2010. Let Sheila know about books that you would like to be considered for next year.

Sheila Marshall 291-2364

TENNIS:

The LND/SMC Tennis Group is in need of one or two substitutes to play tennis from 8:00 AM to 9:00 AM on the following dates:

April 13, 15, 20, 22, 27 and 29 as well as May 4 and 6

If you can play on any of these dates, please contact Alice Henry at <ewh@cse.edu> or 289-3088)

...Thanks, The LND/SMC Tennis Group

From the MEMBERSHIP CHAIR . . .

Please make the following additions and corrections to your 2009 - 2010 Membership Yearbook.

New Member:

Susan Baxmeyer
17711 Woodridge Dr.
South Bend IN 46635
(574) 271-1316
baxmeyer.1@nd.edu

At the close of the 2009-10 year the final membership stands at a total of 265 members. This constitutes 96 renewing members, 26 new members and 143 Life Members.

*Pam Chipman,
Membership Co-Chair*

CHILDREN'S PLAYGROUP
SPRING/SUMMER 2010

It's not too late to join the Ladies of Notre Dame & Saint Mary's College Children's Playgroup! There are a few more activities planned for the end of the year that are a lot of fun! Contact me, Kate Mannor at <katemannor@hotmail.com> to get on the email list! Also, for the summer, I have created a yahoo group that you can join to get "all of the scoop" on activities, advice, and local happenings over the summer months amongst other group members. Do a <yahogroups.com> search on NDSMC playgroup and you'll find us!

Katie Mannor, 271-1617

From the CORRESPONDING SECRETARY . . .

Notes have been sent, representing LND/SMC, to the following people:

SYMPATHY:

- Eleanor Burke, LM on the death of her son-in-law, Ted Werner on March 11, 2010
- Priscilla Magee, LM on the death of her son, Larry Magee on November 18, 2009
- Lucy Emery on the death of her father Lee Fugiel on February 17, 2010.

THINKING OF YOU:

- Elizabeth Henderson, LM

Please feel free to contact each of these members on your own and remember them in your prayers. You may inform me of any life event of LND/SMC members and I will be happy to send a card and hold them in prayer.

*Anne Burks, 309-3231
burksfamily@msn.com
Corresponding Secretary*

CLARE ROACH EXTENDS AN INVITATION TO PARTICIPATE IN A COMMUNITY GARDEN

Here I go again. Since I work part-time for Notre Dame, I get all these emails as an employee. If I see of anything of interest I pass it along. There have been lots of interesting ones lately.

This one I LOVE, LOVE, LOVE!! The University is taking a survey to see if there is interest in the development of a Community Garden at the University. I am totally up for going in on a plot with anyone. If you are interested please contact me.... soon!

Clare Roach, 243-2829



Dated material DO NOT forward
deadline for next issue: **PRIOR to September 6, 2010**
mderwent@nd.edu : editor

Kaleidoscope
LND/SMC
P.O. Box 116
Notre Dame, IN 46556

THE LADIES OF NOTRE DAME & SAINT MARY'S COLLEGE

MEMORIAL MASS
FOR DECEASED MEMBERS
& DECEASED FAMILY MEMBERS

THURSDAY, MAY 6, 2010
5:00 PM

CELEBRANT FR. THOMAS BLANTZ, CSC

ST. JOSEPH'S CHAPEL
SACRED HEART PARISH CENTER
OFF DOUGLAS ROAD
WEST OF MOREAU SEMINARY

ALL ARE WELCOME TO ATTEND THIS MASS